

# KARIBAN

**REFERENCE :** K6127

**SIZES :** XS\_S\_M\_L\_XL\_XXL

**COMPOSITION :**

Main fabric : Polyester pongee 240T - 80 100%polyester

Padding : Polyester polyfil - 150 For padding 100%polyester

Padding : Polyester polyfil - 100 For Front placket and flap pocket padding 100%polyester

Fabric 1 : Cotton corduroy - 285 For inner collar, front shoulder yoke, under flap pocket and bottom binding finishing 100% cotton

Lining 2 : Polyester taffeta 210T - 60 For lining, pocket sack and inner seam binding 100%polyester

**WEIGHT :**

Main fabric : 80 gsm

Padding : 150 gsm

Padding : 100 gsm

Fabric 1 : 285 gsm

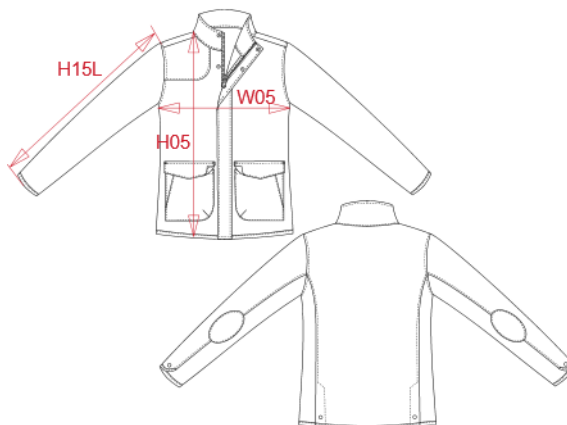
Lining 2 : 60 gsm

**TECHNICAL DETAIL :**

WR: 600mm

**ARTICLE WEIGHT :**

579 gr/pc



DESCRIPTION
<b>Français :</b> Veste matelassée femme
<b>English :</b> Ladies' quilted jacket
<b>Nederlands :</b> Gewatteerde damesjas
<b>Deutsch :</b> Damen-Steppjacke
<b>Español :</b> Chaqueta acolchada rombos de mujer
<b>Italiano :</b> Giacca imbottita donna
<b>Português :</b> Casaco acolchoado de senhora

COLORS	PANTONE SERIGRAFIE
Black / Black	Black / Black
Navy / Black	433C / Black
Mossy green / Black	7771C / Black

MEASUREMENT							
Description	XS	S	M	L	XL	XXL	
<b>H05 (L)</b> Hauteur totale / Total height	62	64	66	68	70	72	
<b>W05 (L)</b> 1/2 largeur poitrine / 1/2 chest width	45	48	51	54	57	60	
<b>H15L (L)</b> Longueur manche longue / Long sleeve length	60	61	62	63	64	65	

CARE LABEL

PACKING	
Box	10 pcs / box XS => L:60cm W:40cm H:36cm GW:6.6kg NW:5.1kg S => L:60cm W:40cm H:36cm GW:6.9kg NW:5.4kg M => L:60cm W:40cm H:36cm GW:7.3kg NW:5.8kg L => L:60cm W:40cm H:36cm GW:7.6kg NW:6.1kg XL => L:60cm W:40cm H:36cm GW:7.9kg NW:6.4kg XXL => L:60cm W:40cm H:36cm GW:8.2kg NW:6.7kg