

# KARIBAN

**REFERENCE :** K623

**SIZES :** S\_M\_L\_XL\_XXL\_3XL

**COMPOSITION :**

Main fabric : Cotton canvas - 230 100%cotton

Main fabric : Cotton poplin - 115 Tartan lining 100%cotton

Lining 2 : Polyester taffeta 210T - 60 For inside sleeve 100% polyester

**WEIGHT :**

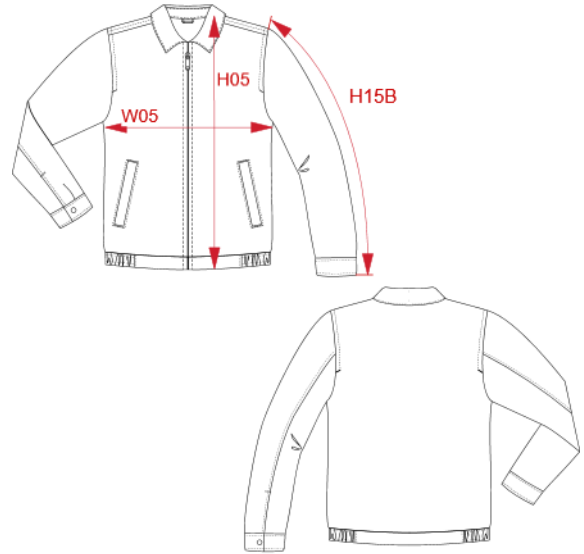
Main fabric : 230 gsm

Main fabric : 115 gsm

Lining 2 : 60 gsm

**ARTICLE WEIGHT :**

650 gr/pc



DESCRIPTION
<b>Français :</b> Blouson Harrington
<b>English :</b> Harrington blouson jacket
<b>Nederlands :</b> Jas Harrington
<b>Deutsch :</b> Blouson Harrington
<b>Español :</b> Cazadora Harrington
<b>Italiano :</b> Giacca Harrington
<b>Português :</b> Blusão Harrington

COLORS	PANTONE SERIGRAPHIE
Navy	433C
Beige	7536C

MEASUREMENT							
Description	S	M	L	XL	XXL	3XL	
<b>H05 (M)</b> Hauteur totale / Total height	68,50	70,50	72,50	74,50	76,50	78,50	
<b>W05 (M)</b> 1/2 largeur poitrine à 1.5cm de l'emmanchure / 1/2 chest width at 1.5cm below armhole	52	55	58	61	64	67	
<b>H15B (M)</b> Longueur manche avec poignet / Sleeve length with cuff	66	67	68	69	70	71	

CARE LABEL

PACKING	
Box	10 pcs / box S => L:60cm W:40cm H:13cm GW:7.4kg NW:5.9kg M => L:60cm W:40cm H:13cm GW:7.7kg NW:6.2kg L => L:60cm W:40cm H:15cm GW:8.0kg NW:6.5kg XL => L:60cm W:40cm H:15cm GW:8.3kg NW:6.8kg XXL => L:60cm W:40cm H:17cm GW:8.6kg NW:7.1kg 3XL => L:60cm W:40cm H:17cm GW:8.9kg NW:7.4kg