

## PR621 Women's Hospitality Waistcoat

### Description

A women's hospitality waistcoat with four button fastening and two functional watch pockets. This waistcoat is great for those who require a more smart and formal approach to service uniforms and looks great with a Premier shirt and tie.

### Product Features:

- Self-fabric back
- Two functional watch pockets
- Four button fastening

### Available In:

S, M, L, XL, 2XL

### Certifications:

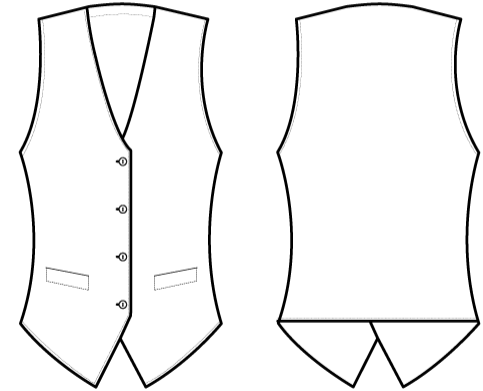


### Colours:

Colour	Pantone	C	M	Y	K
Black	Black c	0	0	0	100

### Fabric:

65% Polyester, 35% Cotton Twill, 195gsm.



### Suggested Decoration:

Screen Print, Transfer Print, Embroidery

### Country of Origin:

China

### Commodity Code:

6211431000

### Features:



### Wash Care:



### Carton Information:

Sizes	Carton	Pack	SKU's	Carton Weight	Carton Dimensions
All Sizes	24	6	5	10kg approx.	60cmx40cmx22cm

### Garment Sizes:

Size	8	10	12	14	16
Bust to fit"	32	34	37	40	44
Bust to fit cm	80	88	96	104	112
Bust actual cm	88	96	104	112	120
Call size	S	M	L	XL	2XL
Back length cm	55	55	55	55	55