



REFERENCE : KP607

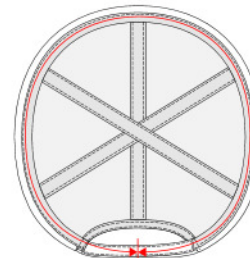
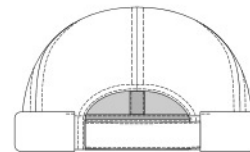
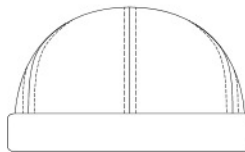
SIZES : S/M_L/XL

COMPOSITION :

Main fabric : Wool / Viscose fabric 60/40 - 600 70%wool 20% polyester 10%viscose

ARTICLE WEIGHT :

60 gr/pc



H50

DESCRIPTION
Français : Bonnet marin
English : Sailor's beanie
Nederlands : Zeemansmuts
Deutsch : Matrosenmütze
Español : Gorro marino
Italiano : Berretto da marinaio
Português : Gorro de marinheiro

COLORS	PANTONE SERIGRAPHIE
Navy	433C

MEASUREMENT						
Description	S/M	L/XL				
H50 Tour de tête / Head measurement	57	59				

CARE LABEL				

PACKING	
Box	100 pcs / box Size => L:50cm W:27cm H:54cm GW:8,5Kg NW:6,5Kg